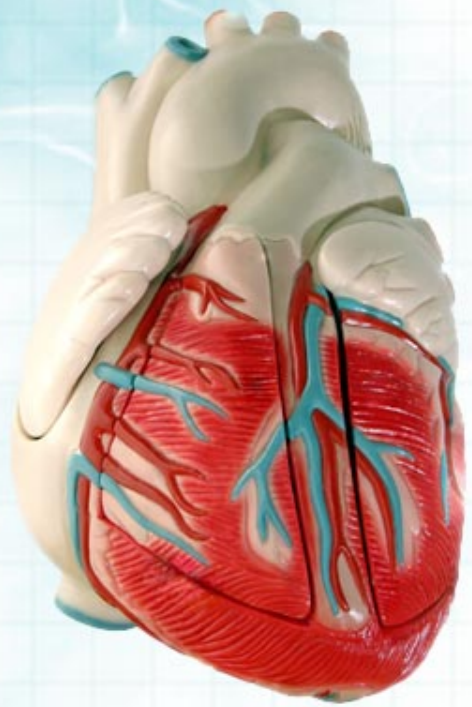
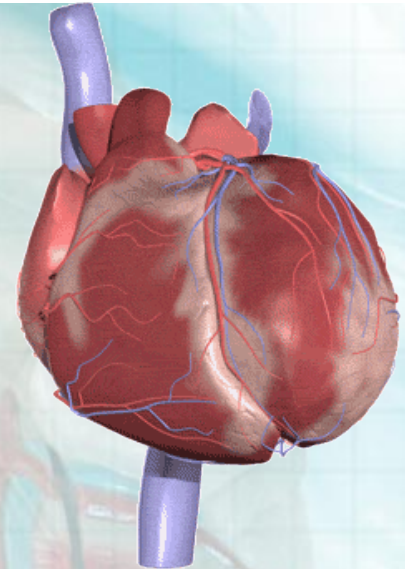


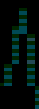
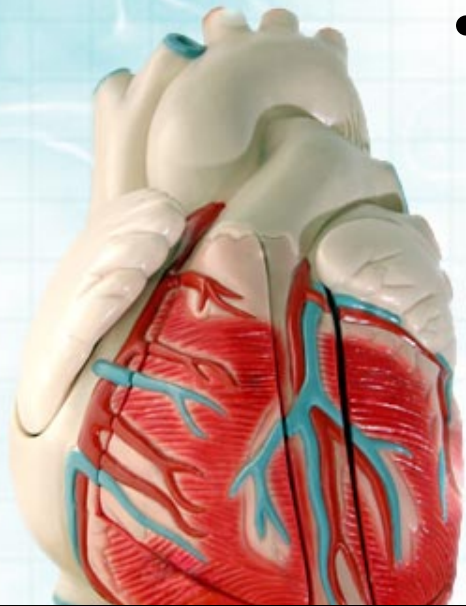
# INTRODUCTION TO CRITICAL CARE NURSING



*Presented by: Omar AL-Rawajfah, RN, PhD*

# Lecture Outlines

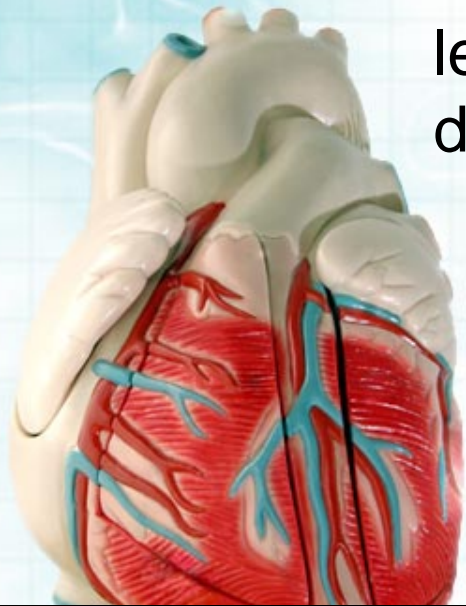
- What is critical care nursing
- Major skills of critical care nurse
- Changing role of the critical care nurse
- Issues related critical care





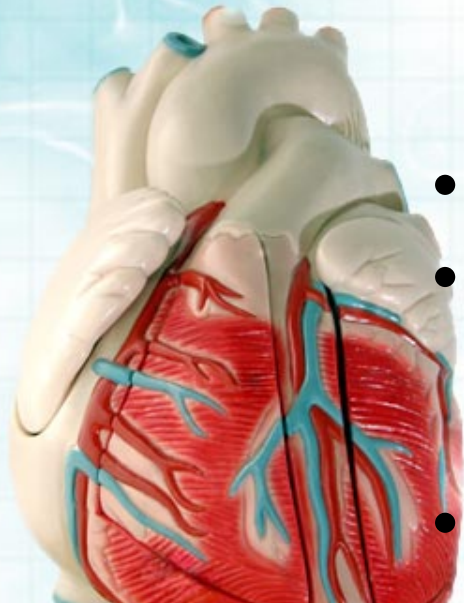
# Critical Care Nursing

- Specialty area of nursing that involve caring for patients and families who are undergoing or potentially life-threatening illness or injury
- Critical care environment needs nurse with high level of special skills such as critical thinking, decision making, competent nursing skills



# Special Skill of Critical Care Nurse

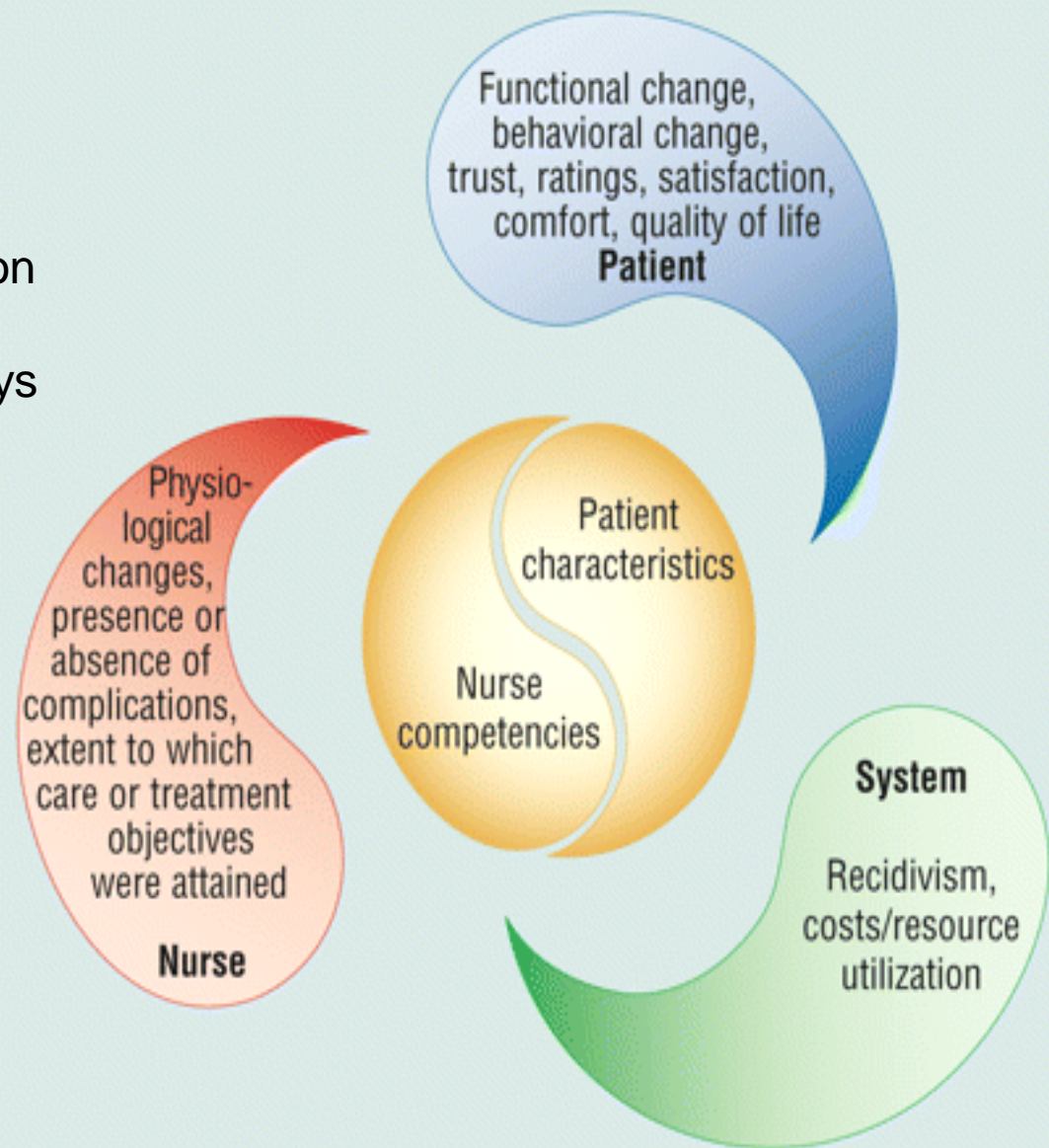
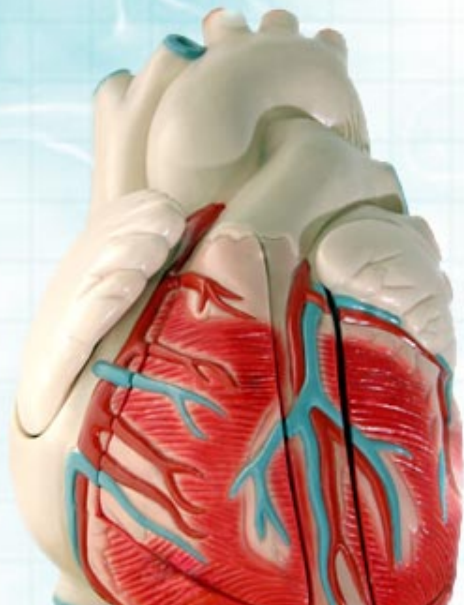
- Critical thinking skills
  - Using nursing process as guide for problem solving
    - **affective components:** confidence, contextual perspective, creativity, flexibility, inquisitiveness, intellectual ability, intuition, open-mindedness, perseverance, and reflection.
    - **cognitive skills:** analyzing, applying standards, discriminating, information seeking, logical reasoning, predicting, & transforming knowledge
- Collaborative skills
- Delegation skills
  - Clinical model: use AUP
  - Nonclinical model: AUP perform non-nursing tasks
- Computer skills





# The Synergy Model

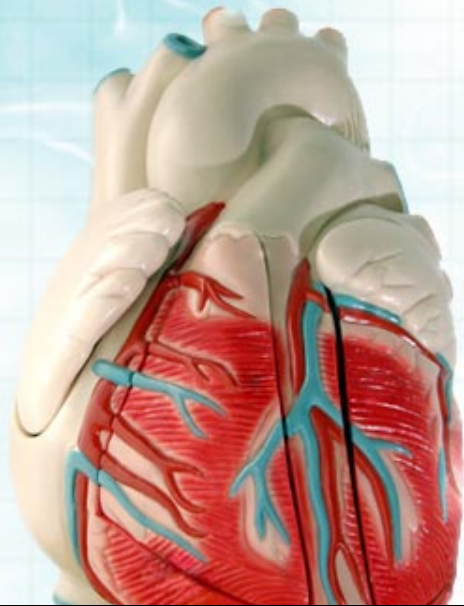
- Synergy is an evolving phenomenon that occurs when individuals work together in mutually enhancing ways toward a common goal.



From Curley M. Patient-nurse synergy: optimizing patients' outcomes. *Am J Crit Care*. 1998;7:69. Reprinted with permission.

# The Synergy Model

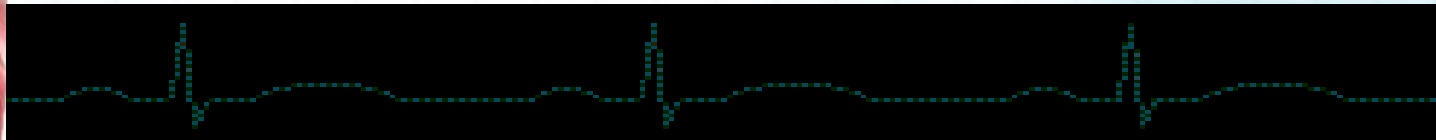
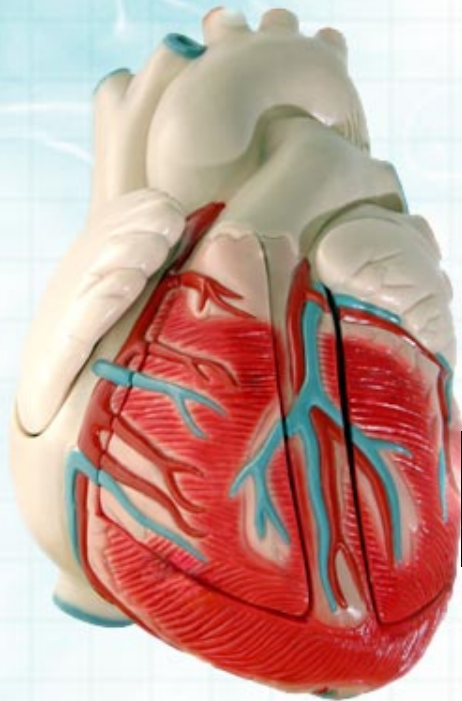
- **Synergy:** results when the needs and characteristics of a patient are matched with a nurse's competencies
- **Patient Characteristics**
  - Resiliency
  - Vulnerability
  - Stability
  - Complexity
  - Resource availability
  - Participation in care
  - Participation in decision making
  - Predictability





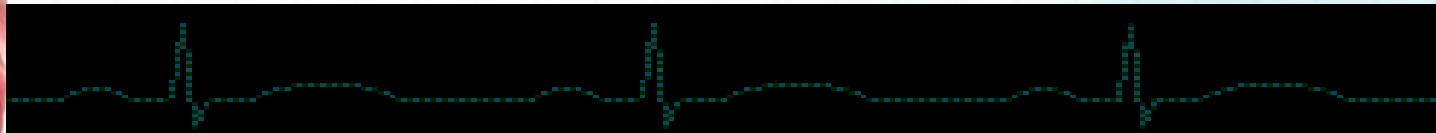
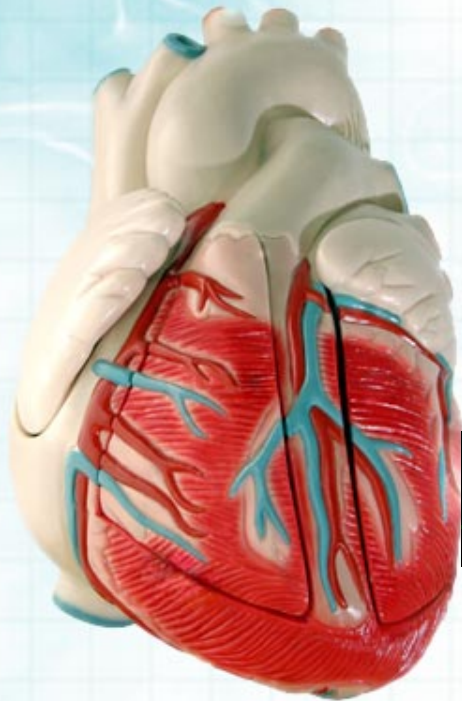
# The Synergy Model

- **Synergy:** results when the needs and characteristics of a patient are matched with a nurse's competencies
- **Nurse Competencies**
  - Clinical Judgment
  - Advocacy and Moral Agency
  - Caring Practices
  - Collaboration
  - Systems Thinking
  - Response to Diversity
  - Facilitation of Learning
  - Clinical Inquiry (Innovator/Evaluator)



# Changing Role of the Critical Care Nurse

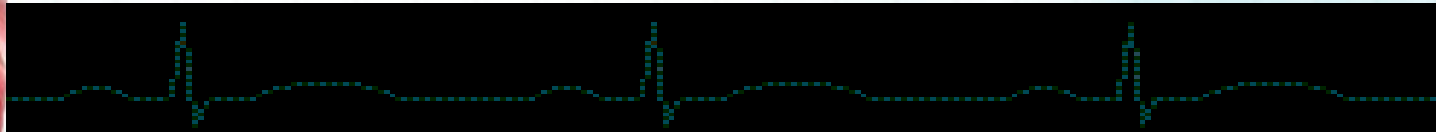
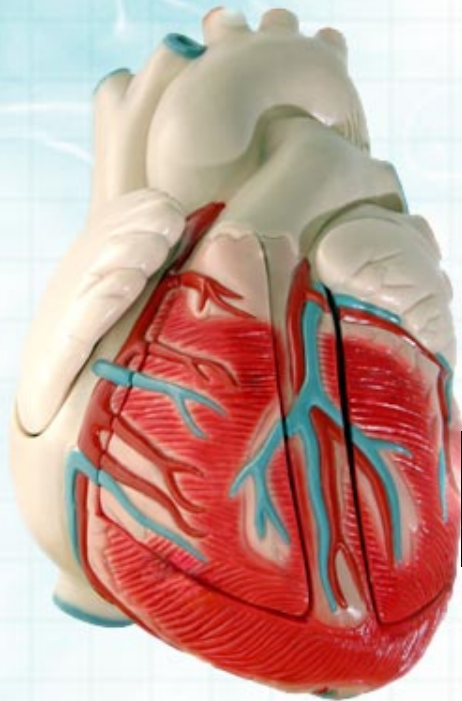
- Staff nurse role
  - Knowledge
  - Skilled
  - Decision-maker
- Advance practice role
  - Clinical nurse specialist (CNS)
    - Educator
    - Researcher
    - Consultant
    - Manager





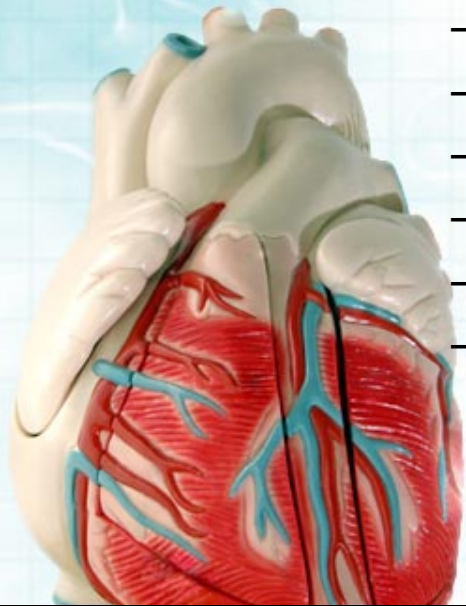
# Changing Role of the Critical Care Nurse

- Advance practice role
  - Acute Care Nurse Practitioner (ACNP)
    - Acts autonomously
    - Needs well developed skills
  - Case manager
    - facilitate the patient's movement through the system
  - Outcome manager
    - Quality assurance issues



# Issues Related to Critical Care

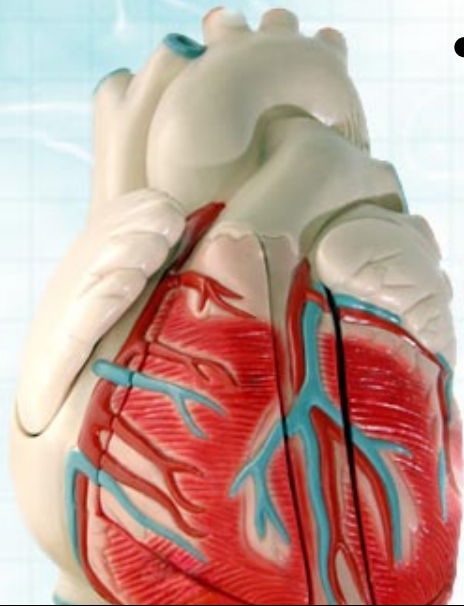
- Advance directives and End-of-life decisions
  - Self-determination
  - Family decision-making status
- Resuscitation
  - Implied consent: all hospitalized patient would want CPR
  - “Do Not Resuscitate” (DNR)
- Informed consent
  - Diagnosis
  - Treatment
  - Risk of treatment
  - Anticipated benefits
  - Alternative treatment
  - Prognosis of treatment





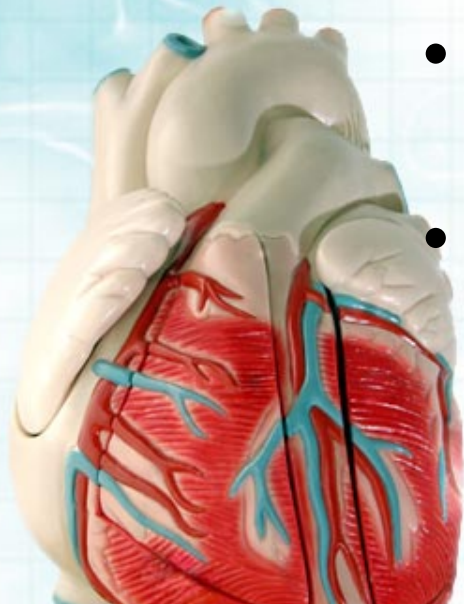
# Issues Related to Critical Care

- Brain death
  - Whole-brain death “the permanent, irreversible cessation of functioning of all of brain areas”
    - Complete loss of consciousness
    - Absent corneal, oculovestibular, oropharyngeal ventilatory reflexes
- Organ donation
  - Heart & lungs
  - Kidneys
  - Liver
  - Corneas



# Electronic Resources

- <http://www.medi-smart.com/criticalcare.htm>
- <http://www.healcentral.org/>
- <http://www.americanheart.org>
- <http://library.med.utah.edu/kw/ecg/index.html>
- <http://www.medicneppt.com/resources/>
- **Contact information**
  - Instructor: Dr. Omar AL-Rawajfah, RN, PhD
  - Phone No.: Office: 02-629-7000, Ext-2859
  - Email: [rawajfah@aabu.edu.jo](mailto:rawajfah@aabu.edu.jo)





# Questions and Answers

